

MOTOMCO FARM & HOME

**Kills Anticoagulant
Resistant Norway
Rats, Roof Rats &
House Mice**

**Norway Rats, Roof
Rats & House Mice
Cease Feeding
After Consuming
A Toxic Dose**

With Bromethalin

RAMPAGE[®]

Pelleted Bait

This Product May Only be Used Inside and
Within 100 Feet of Man-made Structures
and For All Burrow Baiting

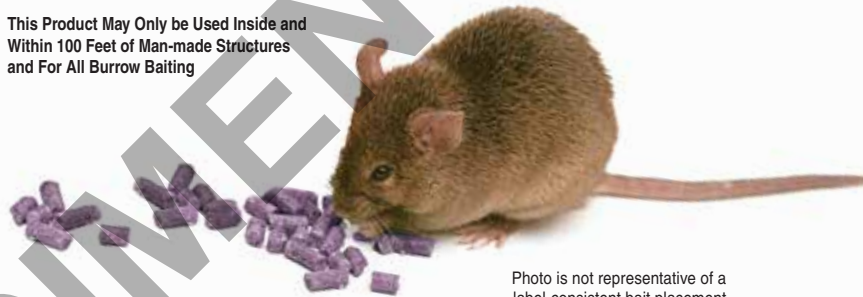


Photo is not representative of a
label-consistent bait placement

KILLS RATS, MICE & MEADOW VOLES*

ACTIVE INGREDIENT:

Bromethalin (CAS #63333-35-7): 0.01%

OTHER INGREDIENTS†: 99.99%

†Contains Denatonium Benzoate TOTAL 100.00%

**Net Weight:
12 lbs (5.4 kg)**

KEEP OUT OF REACH OF CHILDREN

CAUTION

See back panels for First Aid and
additional precautionary statements.

*Not permitted for use against the following species in California: Cotton rat, Eastern harvest mouse, Golden mouse, Polynesian rat, Meadow vole, White-throated woodrat, Southern plains woodrat, and Mexican woodrat

FIRST AID

HAVE LABEL WITH YOU WHEN OBTAINING TREATMENT ADVICE

IF SWALLOWED:

- Call a poison control center, doctor, or 1-877-854-2494 immediately for treatment advice.
- Have person sip a glass of water if able to swallow.
- Do not induce vomiting unless told to do so by the poison control center or doctor.

TREATMENT FOR PET POISONING

If an animal eats this bait, call a veterinarian at once.

NOTE TO PHYSICIAN OR VETERINARIAN

Contains the nerve poison Bromethalin. This product is not an anticoagulant type rodenticide. For humans or animals ingesting bait and/or showing poisoning signs (such as muscle tremors, loss of hind limb use, or seizures for animals), limit absorption by either emesis or gastric lavage. Sublethal symptoms, if present, would be the result of cerebral edema and should be treated accordingly through administration of an osmotic diuretic and corticosteroid.

DIRECTIONS FOR USE

It is a violation of Federal law to use this product in a manner inconsistent with its labeling.

READ THIS LABEL: Read this entire label and follow all use directions and use precautions.

IMPORTANT: Do not expose children, pets or nontarget animals to rodenticides. To help prevent exposure:

1. Store unused product out of reach of children and pets.
2. Apply bait in locations out of reach of children, pets, domestic animals and nontarget wildlife, or in tamper-resistant bait stations. These stations must be resistant to destruction by dogs and by children under six years of age and must be used in a manner that prevents such children from reaching into bait compartments and obtaining bait. If bait can be shaken from bait stations when they are lifted, units must be secured or otherwise immobilized. Stronger bait stations are needed in areas open to hooded livestock, raccoons, bears or other potentially destructive animals, or in areas prone to vandalism.
3. Dispose of product container and unused, spoiled or unconsumed bait as specified on this label.

Bait stations are mandatory for outdoor, above-ground use. Tamper-resistant bait stations must be used wherever children, pets, non-target mammals, or birds may have access to the bait placement location.

USE RESTRICTIONS: This product may only be used to control the following rodent pests in and around man-made structures: House mouse (*Mus musculus*), Norway rat (*Rattus norvegicus*), Roof rat (*Rattus rattus*), Cotton rat* (*Sigmodon hispidus*), Eastern harvest mouse* (*Reithrodontomys humulii*), Golden mouse* (*Ochrotomys nuttalli*), Polynesian rat* (*Rattus exulans*), Meadow vole* (*Microtus pennsylvanicus*), White-throated woodrat* (*Neotoma albigula*), Southern plains woodrat* (*Neotoma micropus*), and Mexican woodrat* (*Neotoma mexicana*). This product must be used in and within 100 feet of man-made structures constructed in a manner so as to be vulnerable to commensal rodent invasions and/or to harboring or attracting rodent infestations. Examples of such structures include homes and other permanent or temporary residences, food processing facilities, industrial and commercial buildings, trash receptacles, agricultural and public buildings, transport vehicles (ships, trains, aircraft), docks and port or terminal buildings and related structures around and associated with these sites. Fence and perimeter baiting, beyond 100 feet from a structure as defined above, is prohibited. This product must not be applied directly to food or feed crops.

This product may be applied to active rodent burrows to control rats within or beyond 100 feet of buildings and man-made structures, provided that infestations of these rodents have been confirmed. Bait must be placed no less than 6 inches into active rat burrows. Do not broadcast bait. Because Norway/roof rat infestations may occur in areas farther than 100 feet from buildings and man-made structures when the rodents have ample supplies of food and cover, efforts should be made to remove food trash, garbage, clutter and debris.

Do not place bait near or inside ventilation duct openings. Do not contaminate water, food, feedstuffs, food or feed handling equipment, or milk or meat handling equipment or surfaces that come into direct contact with food. When used in USDA inspected facilities, this product must be applied in tamper-resistant bait stations.

Do not sell this product in individual containers holding less than 4 pounds of bait.

MOTOMCO FARM & HOME

RAMPAGE® Pelleted Bait

KILLS RATS, MICE & MEADOW VOLES*

**KILLS ANTICOAGULANT RESISTANT NORWAY
RATS, ROOF RATS AND HOUSE MICE**

Norway rats, roof rats and house mice cease feeding after consuming a toxic dose.

ACTIVE INGREDIENT:

Bromethalin (CAS #63333-35-7): 0.01%

OTHER INGREDIENTS†: 99.99%

†Contains Denatonium Benzoate TOTAL 100.00%

KEEP OUT OF REACH OF CHILDREN CAUTION

See side panels for First Aid and additional precautionary statements.

STORAGE AND DISPOSAL

Do not contaminate water, food or feed by storage or disposal.

PESTICIDE STORAGE: Store only in original container in a cool, dry place inaccessible to children and pets. Keep containers closed and away from other chemicals.

PESTICIDE DISPOSAL: Wastes resulting from the use of this product may be placed in trash or delivered to an approved waste disposal facility.

CONTAINER HANDLING: Nonrefillable container. Do not reuse or refill this container. Offer for recycling, if available. Dispose of empty container by placing in trash, at an approved disposal facility or by incineration.

WARRANTY: To the extent consistent with applicable law, seller makes no warranty, expressed or implied, concerning the use of this product other than indicated on the label. Buyer assumes all risk of use and/or handling of this material when such use and/or handling is contrary to label instructions.

Net Weight: 12 lbs (5.4 kg)

EPA REG. NO.: 12455-137-3240

EPA EST. NO.: 12455-WI-1

Available Exclusively From:

MOTOMCO

The World Leader In Rodent Control Technology®

3699 Kinsman Blvd.
Madison, WI 53704 U.S.A.
www.motomco.com
MADE IN USA

DIRECTIONS FOR USE (Continued from other panel)

SELECTION OF TREATMENT AREAS: Determine areas where rats, mice or meadow voles* will most likely find and consume the bait. Generally, these areas are along walls, by gnawed openings, in or beside burrows, in corners and concealed places, between floors and walls, or in locations where signs of rodents have been seen. Protect bait from rain and snow. Remove as much alternative food as possible.

APPLICATION DIRECTIONS:

Rats: Apply 1 to 6 ounces of bait per placement (usually at intervals of 15 to 30 feet). Adjust the amount of bait applied to the level of rat feeding expected at each bait placement.

For treating burrows, use a long-handled spoon to place ½ to 1 ounce of bait deep into each active burrow entrance. Close burrows with soil 3 to 7 days after bait placement. Retreat burrow entrances that are reopened by rats. If the area where treated burrows are located is accessible to children and nontarget animals, check burrows every morning and evening to make sure that bait has not been pushed out of burrows. Remove and properly dispose of any bait that has become accessible to children or nontarget animals.

Mice and Meadow Voles*: Apply ¼ to ½ ounce of bait per placement. Space placements at intervals of 8 to 12 feet in infested areas. Larger placements, up to 2 ounces, may be used at points of extremely high mouse or meadow vole* activity.

Baiting Strategy: Highest bait consumption is expected to occur on the first day or two after treatment begins. After several days, inspect the placement and replenish bait at sites where there is evidence of heavy feeding or where there is continued evidence of rodent activity.

Normally, the volume of bait consumed will be significantly less with bromethalin baits than with anticoagulant baits. Although one night's feeding will usually provide a lethal dose, maintain bait for at least one week to provide all rodents a chance to feed on the bait. Continue baiting until all signs of feeding have ceased.

FOLLOW-UP: Replace contaminated or spoiled bait immediately. Using waterproof gloves, collect and properly dispose of all dead, exposed animals and leftover bait. To discourage reinfestation, limit sources of rodent food, water and harborage as much as possible. If reinfestation does occur, repeat treatment. Where a continuous source of infestation is present, establish permanent bait stations and replenish them as needed.

PRECAUTIONARY STATEMENTS

Hazards to Humans and Domestic Animals

CAUTION: Harmful if swallowed. Keep away from children, domestic animals and pets. Do not get in eyes, on skin or on clothing. All handlers (including applicators) must wear long-sleeve shirt, long pants, shoes plus socks, and gloves. Any person who retrieves carcasses or unused bait following application of this product must wear gloves.

User Safety Requirements

Follow manufacturer's instructions for cleaning/maintaining PPE. If no such instructions for washables exist, use detergent and hot water. Keep and wash PPE separately from other laundry. Remove PPE immediately after handling this product. Wash the outside of gloves before removing them. As soon as possible, wash hands thoroughly after applying bait and before eating, drinking, chewing gum, using tobacco or using the toilet and change into clean clothing.

ENVIRONMENTAL HAZARDS

This product is extremely toxic to mammals and birds. Dogs and other predatory and scavenging mammals and birds might be poisoned if they feed upon animals that have eaten this bait. Do not apply directly to water, or to areas where surface water is present or to intertidal areas below the mean high water mark. Runoff also may be hazardous to aquatic organisms in water adjacent to treated areas. Do not contaminate water when disposing of equipment wash water or rinsate.

*Not permitted for use against the following species in California: Cotton rat, Eastern harvest mouse, Golden mouse, Polynesian rat, Meadow vole, White-throated woodrat, Southern plains woodrat, and Mexican woodrat

100616/08-15