

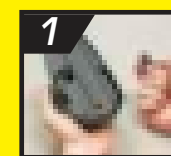
KILLS MICE

MOTOMCO FARM & HOME™

TOMCAT®

Incorporating the latest in design and effectiveness, Tomcat's SPIN TRAP™ for mice is a better, easier way to trap mice around the home. Its user-friendly design is easy to set and clearly indicates when a mouse has been caught. The fully-enclosed capture area kills mice quickly and helps keep you from being exposed to the dead rodent. Once triggered, simply toss out the entire trap. It's that simple.

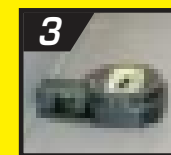
DIRECTIONS FOR USE



Remove bait cup from bottom of trap and apply a small amount of Tomcat Mouse Attractant Gel (sold separately) or peanut butter. Replace bait cup.



Set trap by pulling entryway out until it locks into the "SET" position. This will expose 2 openings allowing entry into the trap.



Place trap perpendicular to a wall or other structure in areas where mice or their signs have been observed.



Once a mouse has been captured and killed the trap will indicate "CAUGHT!". Simply dispose of the entire trap.

PLACEMENT OPTIONS



For Placement Against Wall



For Corner Placement

Available Exclusively From:

MOTOMCO

3699 Kinsman Blvd., Madison, WI 53704 U.S.A.
www.motomco.com



MADE IN USA

EPA EST. NOs. 12455-WI-1k,
12455-WI-2^h, 12455-WI-3^W
Superscript is first letter of the lot number.



SPIN TRAP For Mice



SPIN TRAP For Mice

ADVANTAGES



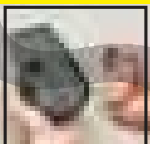
Two-way entry allows mice to enter from either direction



Flat entry panel ensures accurate trap placement for superior results



Innovative design allows for optional corner placement



Removable bait cup makes baiting the trap very user-friendly

ENTRYWAY TO SET



SPIN TRAP For Mice

**KILLS QUICKLY
NO MESS**

2 TRAPS

MADE IN USA

FPO

0 48745 33549 0

39AG-1

101917